



HH LUX[®]

When nature meets interior design

Real stone, thin & flexible.
For wall, light, and facade.

the future
of stone.

hhlux.com

The INNOVATION:

Real stone, thin & flexible

Slate-Lite is an innovative **real stone veneer** that consists of an ultra-thin layer of natural stone and a backing reinforced with glass fibers or cotton.

We have developed a specialized process to extract many ultra-thin slabs from the most beautiful stone blocks in the world. Each of these slabs is a **unique piece**, **handcrafted** through **over 12 processing steps**.

Despite its lightweight nature, Slate-Lite **retains the texture and appearance of a solid stone slab**. Our stone veneer is only **approximately 1.5 mm thin and even flexible**.



DIN EN 15102:2011-12
DIN EN 15102:2008+A1:2011



MPA NRW.





Nordic Interior with Exclusive Lighting and Slate Cladding for decor design

At HH LUX, we specialize in creating and designing lighting and wall decorations using natural materials. We are deeply passionate about integrating nature into interior design in an ethical, sustainable, and timeless way, which is reflected in all of our products.

We offer unique, natural stone cladding with beautiful slate solutions, perfect for both commercial and private spaces. Whether for restaurants, hotels, reception areas, or other business premises, we create interior solutions with or without lighting that add a distinctive and aesthetic touch. Walldecorations with and without light. Here we take the nature right into the room.

HH LUX ApS

Helle Haslund Hollen /CEO and Director · Visti Hollen/Partner and Sale



SLATE|LITE

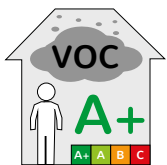
The all-rounder



Suitable for indoor & outdoor use ✓

Variable sizes up to 2.800 x 1.200 mm ✓

More durable than raw stone slabs ✓

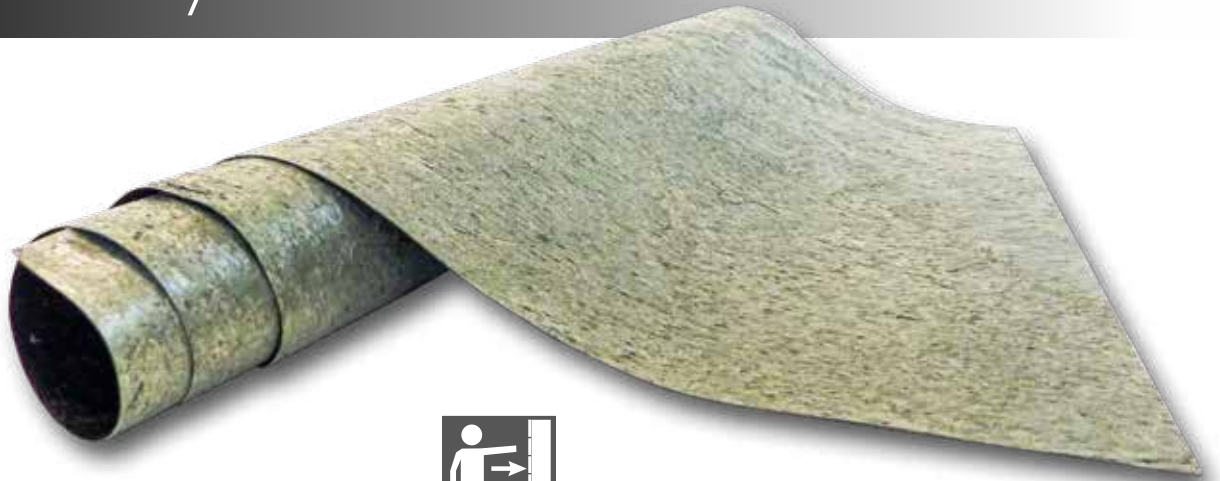


Slate-Lite is a thin stone veneer with a fiberglass backing and a 100% natural stone surface. Despite its lightweight construction and a total thickness of only approximately 1.5 mm, it is extremely robust and durable.

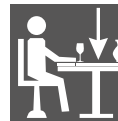
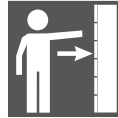
Slate-Lite can be used both indoors and outdoors for wall cladding or as a backsplash in the kitchen. Even extraordinary living spaces made of stone in wet areas like bathrooms or showers are possible with Slate-Lite!



The flexibility marvel



- ✓ Three-dimensionally deformable
- ✓ Cuttable with scissors
- ✓ Total thickness < 1mm



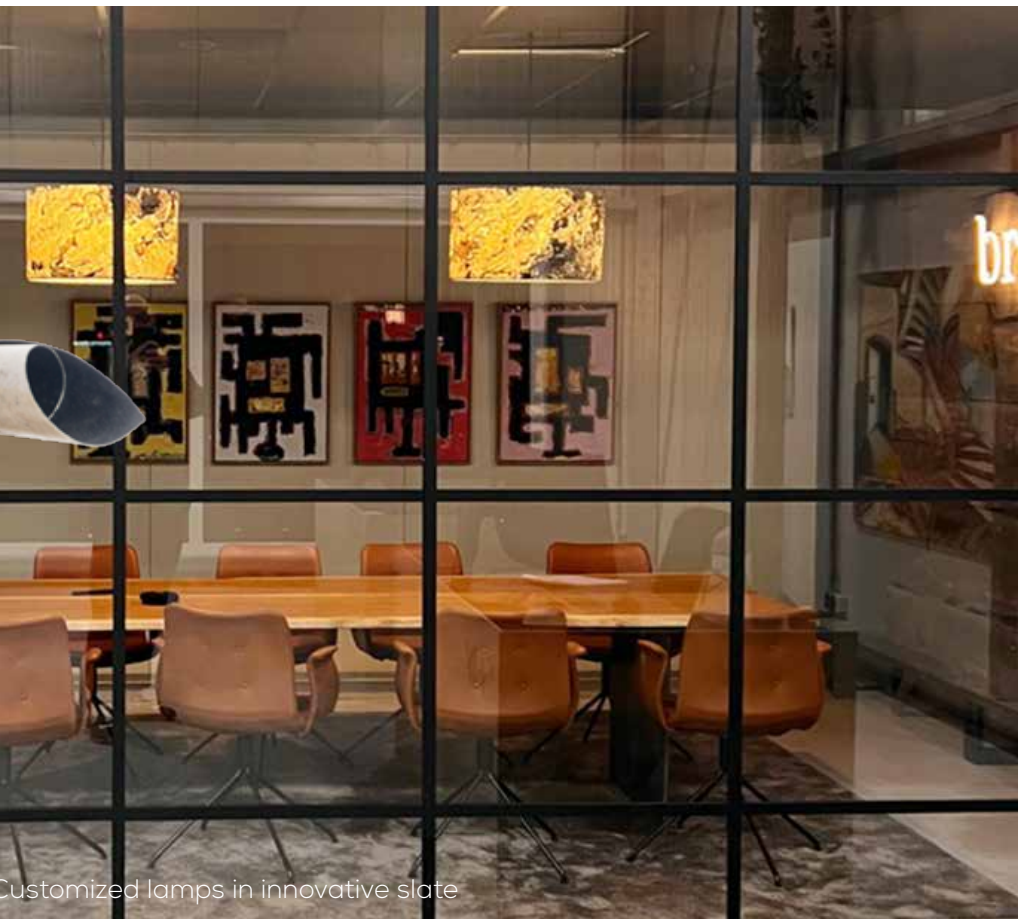
UltraThin eco+ is an extremely thin and flexible real stone decor with a cotton mat as its base.

Thanks to its lightweight and minimal use of natural stone resources, it offers an environmentally friendly solution with CO₂-efficient transportation.

The natural mat on the back enables easy processing and opens up many new possibilities for interior applications and furniture construction.

With UltraThin eco+, you can even master complex custom shapes and challenging edge areas!

The UltraThin eco+ we also use for our lampshades in HH LUX.



Customized lamps in innovative slate

TRANSLUCENT

Eye-catching with luminosity

Different effects depending on the light source. ✓

Variable sizes up to 2.800 x 1.200 mm ✓

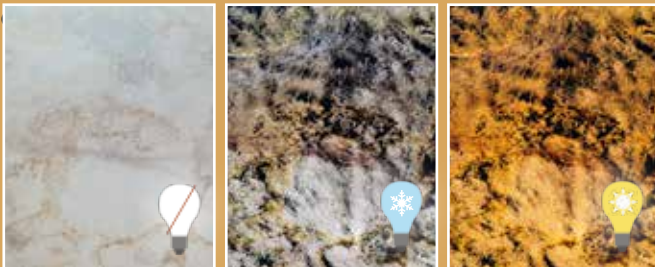
Suitable for any light source ✓



With our Translucent decors, we give the design a unique look, thanks to the **transparent backing material** on the backing!

The light-transmitting backside creates **unique lighting effects** when there is a light source behind the stone sheet, allowing you to create **extraordinary backlit objects!**

Depending on the type of light used, different effects can be achieved: you can use both cold and warm, or even colored light to create your **individual stone light**

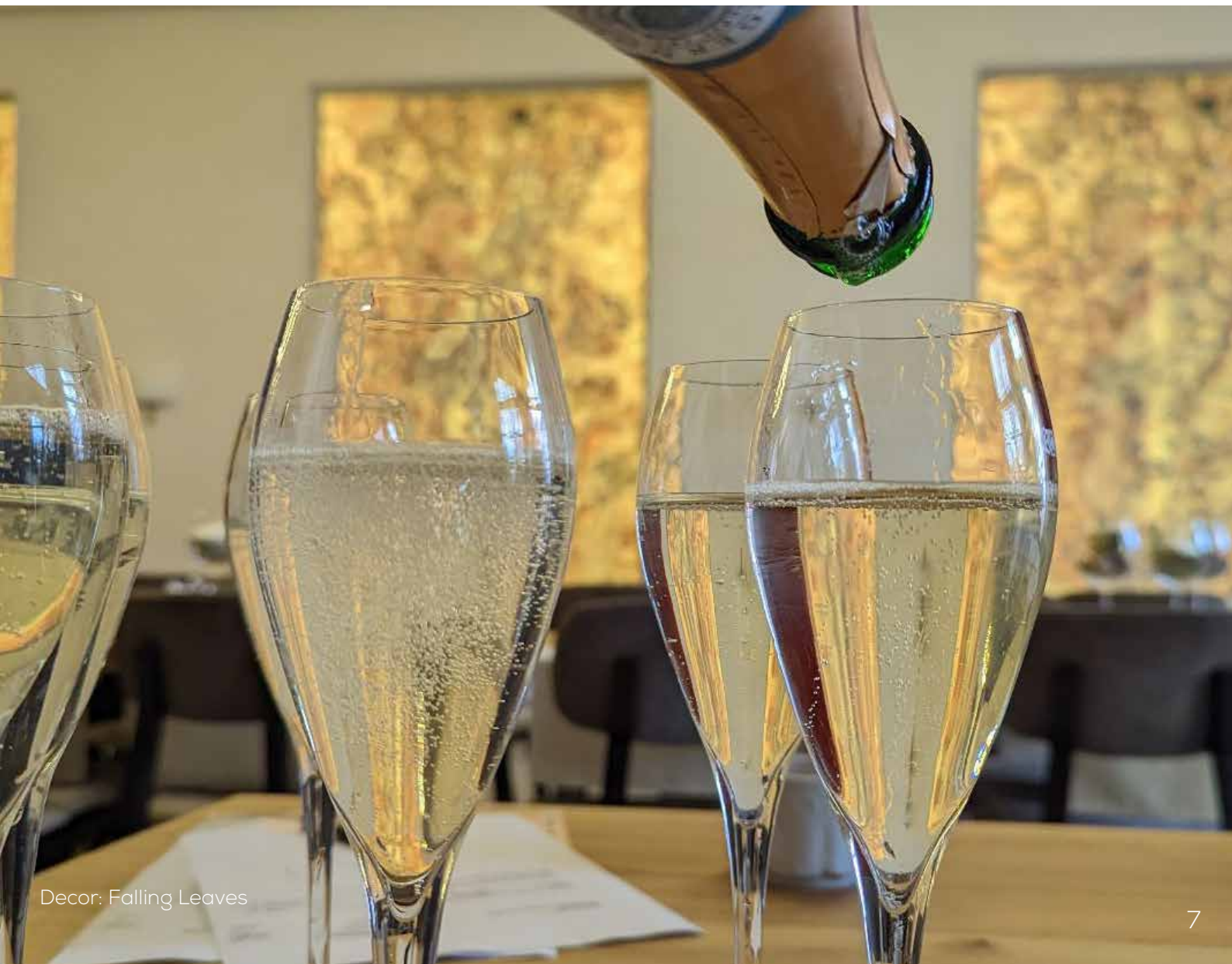


LIGHTBOARDS

Ready-made LED panels in custom sizes



The **all-inclusive package** with a guaranteed WOW effect:
Our **Lightboards** are **custom-made LED panels** featuring our
light-transmitting stone veneers **in your desired size!**
High-quality LED strips create stunning lighting effects, available in
either colorful RGB lighting or warm/cool white lighting.





DREAM BATHROOM NATURAL STONE

MADE OF

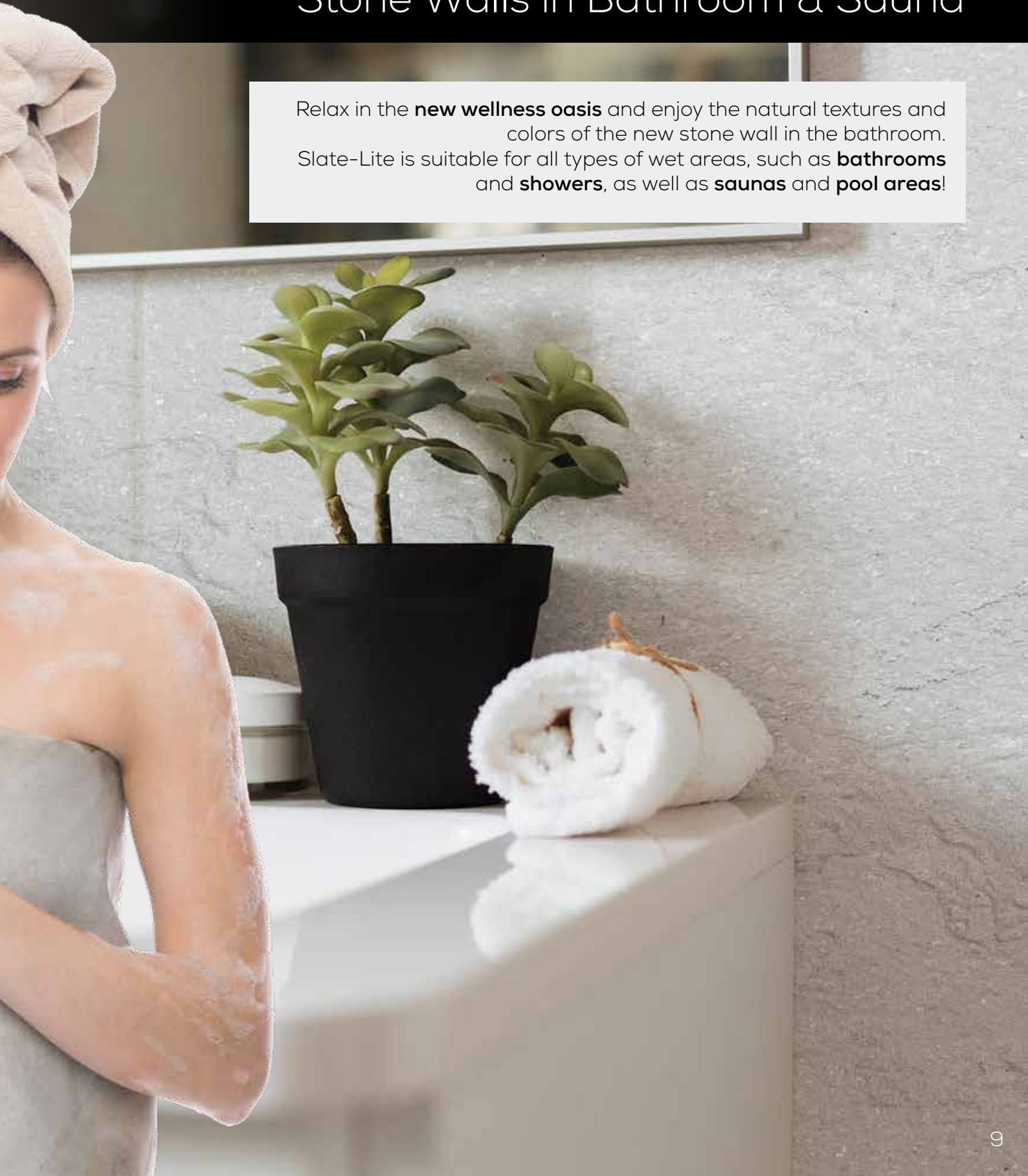
- ✓ Installable directly onto old tiles
- ✓ Reduces seams and joints in the room and can replace large-format tiles that are heavy to work with
- ✓ Water-resistant & durable



MODERN BATHROOM DESIGN

Stone Walls in Bathroom & Sauna

Relax in the **new wellness oasis** and enjoy the natural textures and colors of the new stone wall in the bathroom. Slate-Lite is suitable for all types of wet areas, such as **bathrooms** and **showers**, as well as **saunas** and **pool areas**!







Quick & easy
RENOVATION



Transform the kitchen or buffet with beautiful, real stone that's both stunning and easy to work with.

Upgrade your backsplash, kitchen walls, lighting, or fronts with the finest materials.

Elevate the space and invite the natural beauty of stone into your home.

Slate can even be placed directly over old tiles for a quick and seamless update.

MODERN KITCHEN DESIGN WITH REAL NATURAL STONE

- ✓ Can be installed directly over old tiles
- ✓ Customized to your desired dimensions
- ✓ Durable & easy to maintain



TRANSFORM THE KITCHEN OR BUFFET
flexible and made of real stone



- ✓ UV-resistant & frost-proof
- ✓ More robust than raw stone slabs
- ✓ Water-resistant & easy to maintain

Slate-Lite can easily be glued as a final top layer in an external Thermal insulation composite system on the facade!

The basic construction must be breathable.

The basic construction of the facade is carried out without any special requirements according to applicable rules and standards.



Diagram: ETICS Facade Construction (Example) Including Slate-Lite Top Layer

OUTDOOR AREAS & FACADES

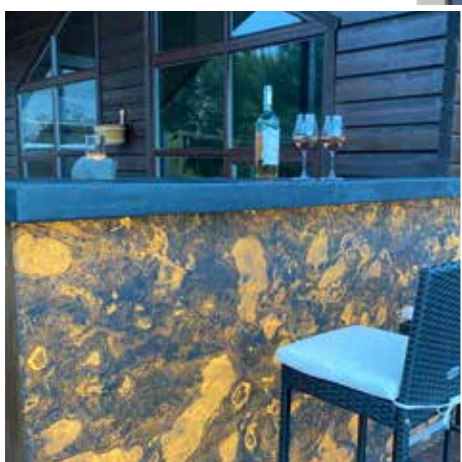
Robust & elegants!

Whether as a design accent in the garden, as a natural privacy screen or as a complete natural stone facade: Slate-Lite is also your reliable partner for modern architecture in outdoor areas!

The easiest way to achieve the dream facade is to use the current facade,

Here you simply adhere our frost-resistant stone veneer as the last top layer without any further changes!

Let our installer help, advise or guide you. We are your partner for a successful project.



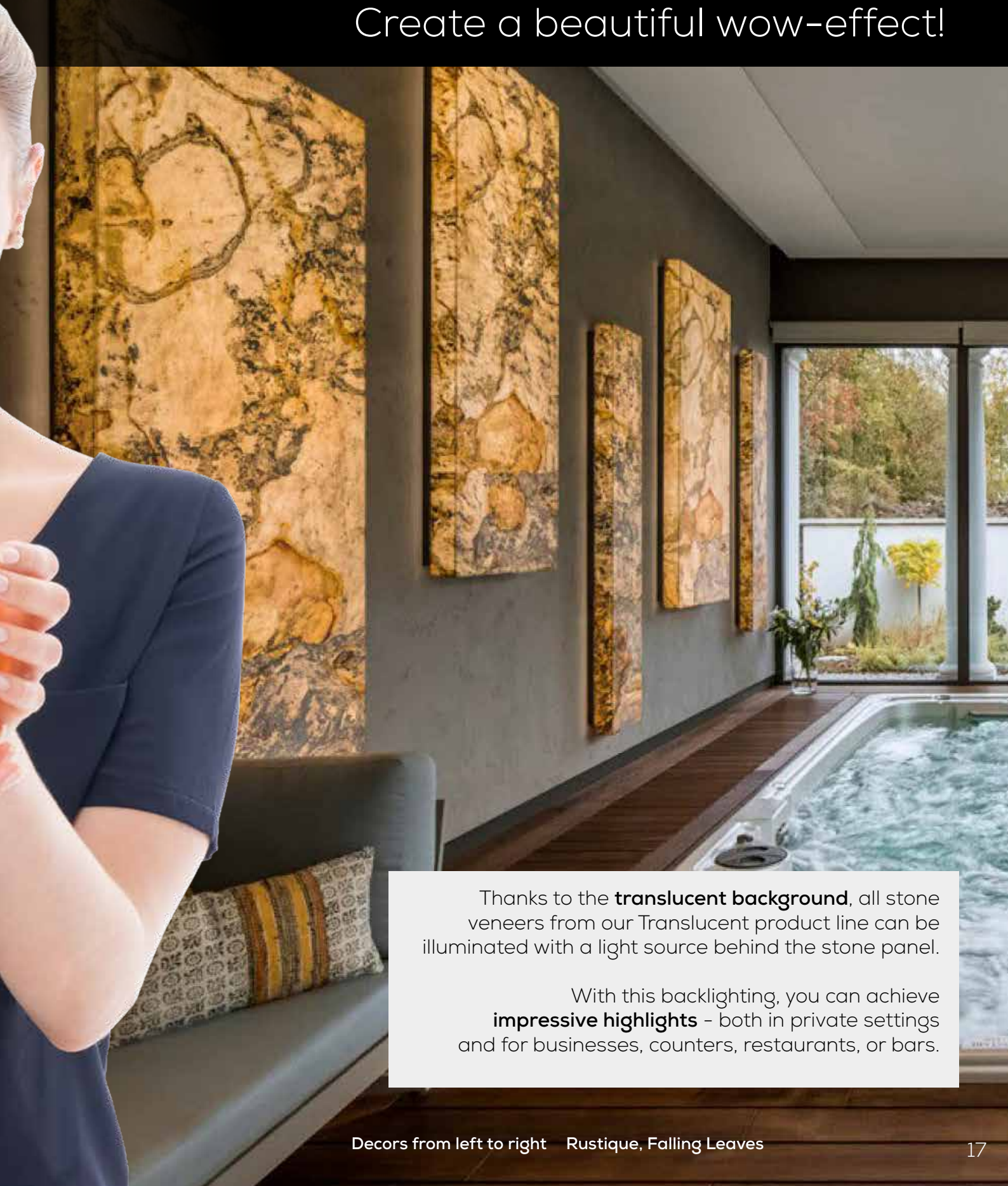
AMAZING LIGHT EFFECTS WITH BACKLITSTONE

- ✓ Various lighting effects possible
- ✓ Suitable for any light source
- ✓ Unique eye-catchers with lighting



LIGHT-PERMEABLE STONE

Create a beautiful wow-effect!



Thanks to the **translucent background**, all stone veneers from our Translucent product line can be illuminated with a light source behind the stone panel.

With this backlighting, you can achieve **impressive highlights** - both in private settings and for businesses, counters, restaurants, or bars.





LIGHT & STONE:

The Perfect Combination with
Endless Possibilities!

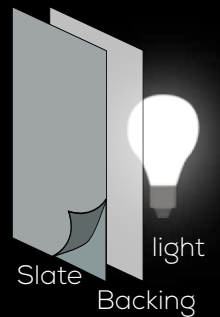
TRANSLUCENT / **STONE** BOARDS

Our ‚regular‘ Translucent decors are perfect for all lighting projects where ease of processing and flexibility are essential.

For optimal stability, an additional acrylic support is provided, depending on the size of the lighting object.

The more robust Stoneboards are the ideal choice when you want to illuminate large, flat surfaces without the need for additional support material.

Due to the increased material thickness, no additional support is required here!

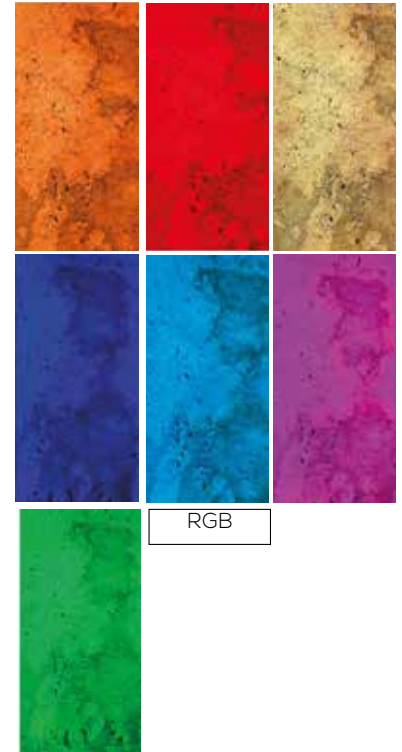
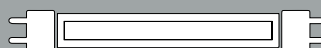
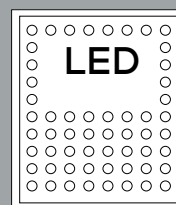


One light source - diverse lighting effects!

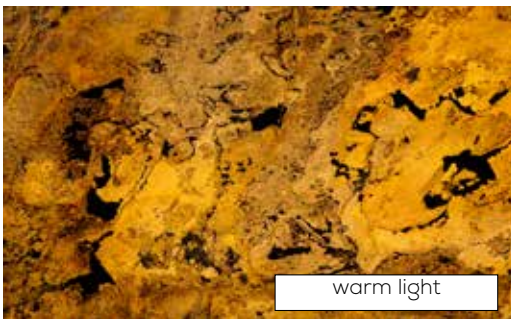
Depending on the type and color of light you use behind the translucent stone panel, you can create entirely different lighting atmospheres.

Whether it's cool light, warm light, or colorful RGB light:

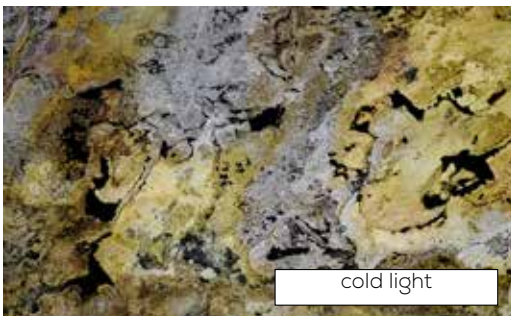
Everything is possible!



without light



warm light



cold light



- ✓ Heat resistant up to 120°C
- ✓ Fire class up to Cs3d0
- ✓ Robust & easy to maintain

WARM DESIGN_{FOR} COLD DAYS



Slate-Lite standardly has the Fire-EU class **Cfl-s1** (according to EN 13501-01 for floor coverings) or **B1** (according to DIN 4102).

Upon request, Slate-Lite is also available in a special composition with the fire class **Cs3d0**!

MODERN FIREPLACES:

Fireplace cladding & backsplashes



Crackling fireplace and cozy warmth - with our stone veneers, this experience becomes even more intense. Easy to use, Slate-Lite brings the **unmatched style of natural stone** directly into the interior.

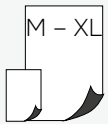
Slate-Lite is not only an eye-catcher but also robust enough to withstand high temperatures.

<div>S - XL</div>	300 x 600 mm	1.220 x 610 mm	2.400 x 1.200 mm	2.800 x 1.200 mm	Custom size
	S	M	L	XL	
SLATE LITE	✓	✓	✓	✓	✓
ULTRA THIN ^{eco+}	-	✓	✓	-	✓
TRANSLUCENT	-	✓	✓	-	✓
ULTRA THIN ^{TRANSLUCENT}	-	✓	✓	-	✓
STONE BOARDS	-	-	✓	-	✓

BRIGHT COLLECTION

Light and friendly is the motto of the ,Bright Collection:
Whether smooth and with few patterns or with expressive lines and grain patterns
- a comfortable atmosphere is guaranteed with all decors here.

ICE PEARL // LIMESTONE



SL

NOT SUITABLE FOR
WET AREAS!



Also available
as PURE ¹⁾

DETAIL

WHITE SPARKLE // MARBLE

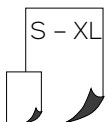


SL



DETAIL

BLANCO // SLATE



SL

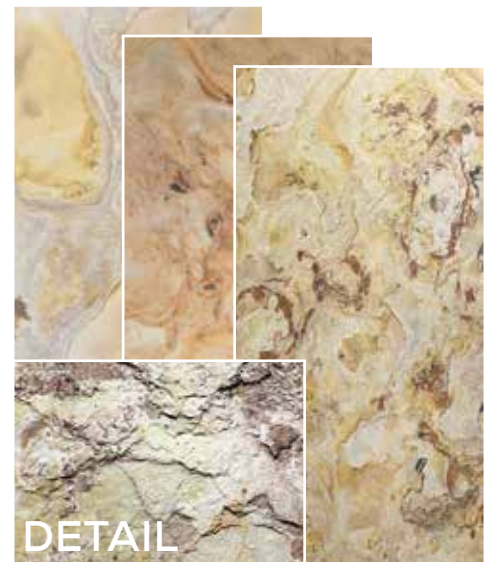


DETAIL

FALLING LEAVES // SLATE



SL



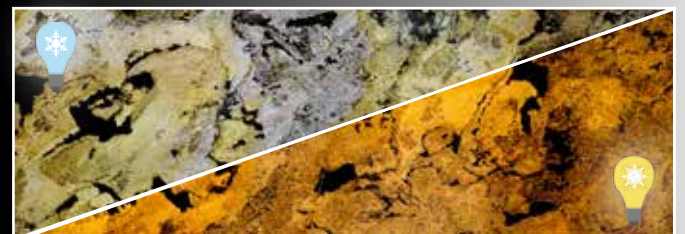
DETAIL



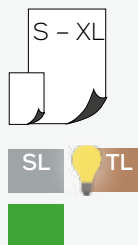
DID YOU KNOW?

Create unique lighting effects
with our Translucent line!

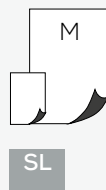
Image Example: FALLING LEAVES



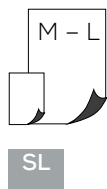
TAN
// SLATE



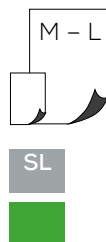
ITALIAN WHITE
// MYCA



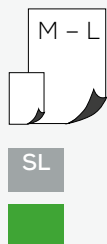
ARCTIC WHITE
// MARBLE



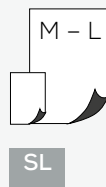
SILVIA
// MARBLE



BRIGHT CREEK
// MARBLE



CLEAR WHITE
// SANDSTONE

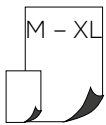




COLOUR COLLECTION

For those who prefer something more eye-catching, our, Colour Collection' offers a variety of possibilities: Vibrant colors and expressive textures liven up any space and provide exciting design options.

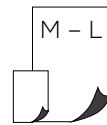
CLEAR WHITE STRIPES
// SANDSTONE



SL



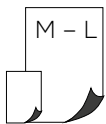
MOLTO ROSA
// SLATE



SL



COBRE
// MYCA



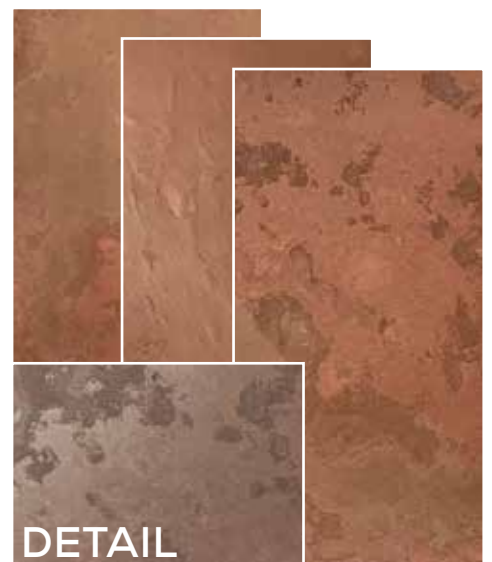
SL



TERRA ROSSO
// SLATE



SL



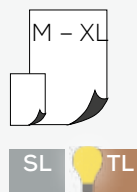
DID YOU KNOW?

Create unique lighting effects with our Translucent line!

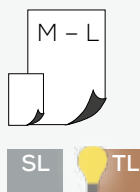
Image Example: TERRA ROSSO



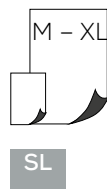
TEAK WOOD // SANDSTONE



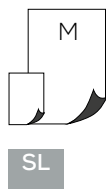
RAINBOW // SANDSTONE



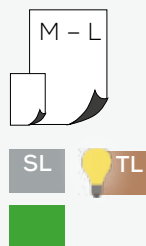
PINK LIMESTONE // LIMESTONE



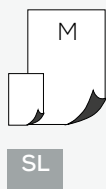
RED SAND // SANDSTONE



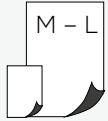
COBRE NEW // MYCA



SILVIA VEIN // MARBLE



RED SHELL
// MARBLE



SL



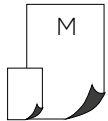
RED CREEK
// MARBLE



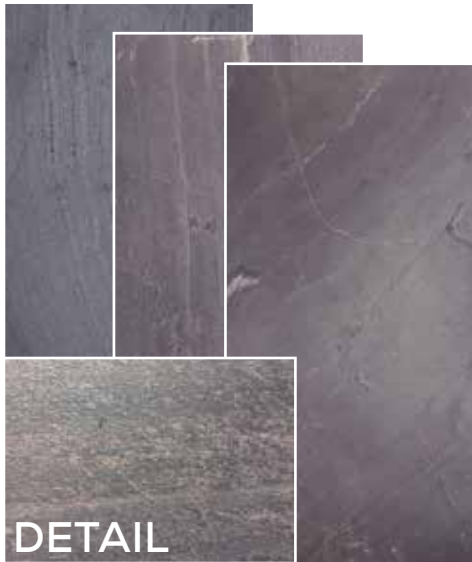
SL



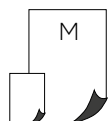
BELGIUM BLUE
// SLATE



SL



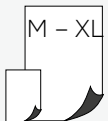
SILVIA WILD
// MARBLE



SL



GREEN PEARL
// LIMESTONE



SL



NOT SUITABLE FOR
WET AREAS!



MYSTIC WHITE
// MARBLE



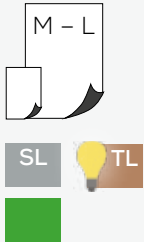
SL



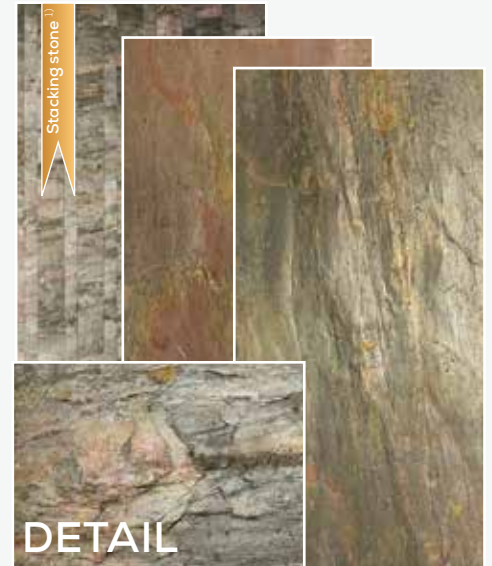
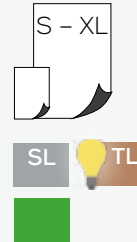
SHINY COLLECTION

For more sparkle in your life: The decors in our 'Shiny Collection' reflect light thanks to the natural quartzite content in the stone, creating a truly shiny atmosphere.

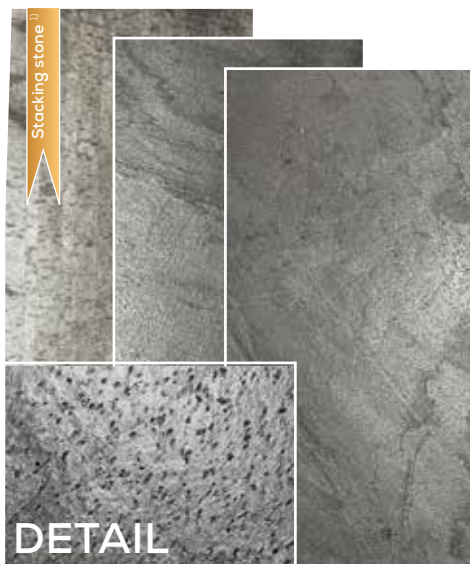
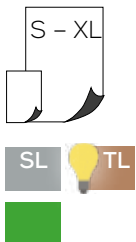
VERDE GRIS
// MYCA



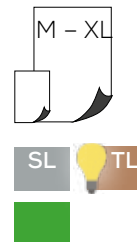
BURNING FOREST
// MYCA



SILVER GREY
// MYCA



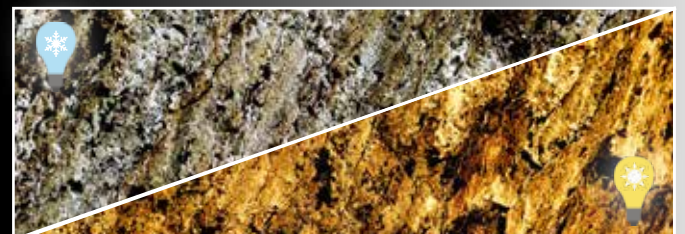
MARE
//MYCA



DID YOU KNOW?

Create unique lighting effects with our Translucent line!

Image Example: BURNING FOREST



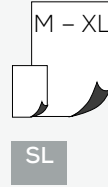
**GALAXY
BLACK**
// MYCA



Also available
as PURE ²⁾

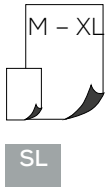
DETAIL

MATRIX
// MYCA



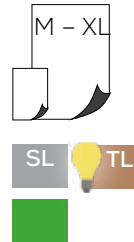
DETAIL

**GREY
LIMESTONE**
// LIMESTONE



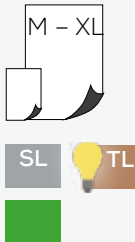
DETAIL

ARGENTO
// MYCA



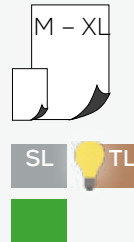
DETAIL

**ARGENTO
AURO**
// MYCA



DETAIL

AURO
// MYCA

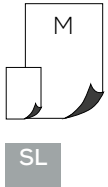


DETAIL

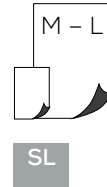
STRUCTURE COLLECTION

The decors in our 'Structure Collection' all feature bold textures and grain patterns on the stone surface. Together with the intense colors, it's the perfect choice for those who prefer something more robust and rough.

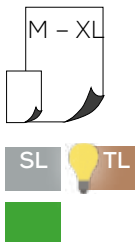
SWISS GREY
// SANDSTONE



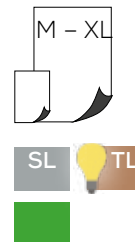
GREEN RIVER
// SLATE



RAINFOREST GREEN
// MARBLE



RAINFOREST BROWN
// MARBLE



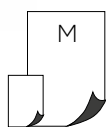
DID YOU KNOW?

Create unique lighting effects with our Translucent line!

Image Example: RAINFOREST GREEN



SUMMER BREEZE
// SANDSTONE

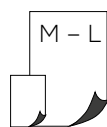


SL



DETAIL

DARK CREEK
// MARBLE

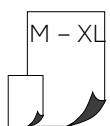


SL



DETAIL

MONSOON BLACK
// MARBLE

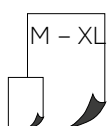


SL



Available in
2 versions ¹⁾

BLACK PEARL
// SANDSTONE

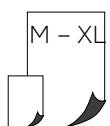


SL



DETAIL

VERDE
// MYCA



SL

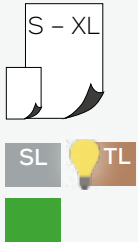


DETAIL

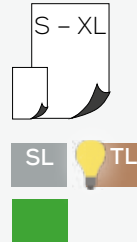
DARK COLLECTION

Timelessly classic and elegant: The decors in our 'Dark Collection' create perfect contrasts and seamlessly blend into any style of interior design. For design statements with style!

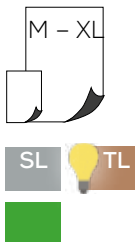
NERO // SLATE



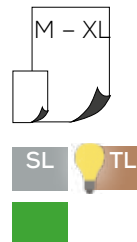
RUSTIQUE // SLATE



CALIFORNIA GOLD // SLATE



D.BLACK // MYCA



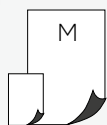
DID YOU KNOW?

Create unique lighting effects with our Translucent line!

Image Example: RUSTIQUE



JADE GREEN
// LIMESTONE



SL



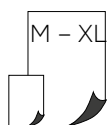
ARCOBALENO COLORE NEW
// SLATE



SL



CALIFORNIA GREY
// SLATE



SL



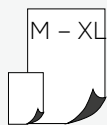
BLACK LINE
// SLATE



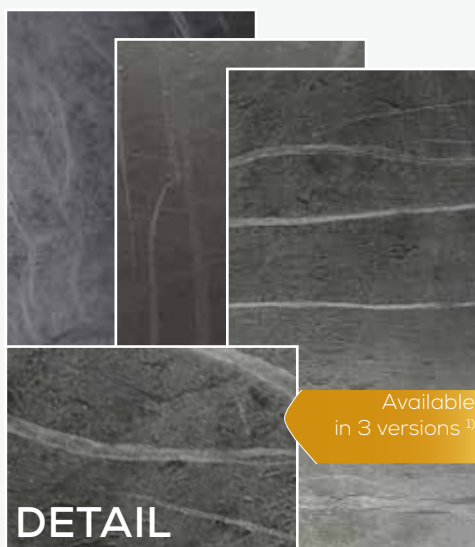
SL



TERRA NOIR
// SLATE



SL



Available
in 3 versions ¹⁾

HH LUX®

When nature meets interior design

Elevate your interior and
bring the beauty of nature
to the decor!

